

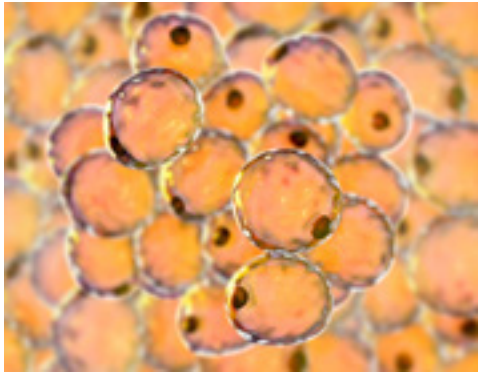
T.W.I.N.E.

effect



DEOXYCHOLIC LIPOLYTIC SOLUTION

MoMed
SKINCARE



MECHANISM OF ACTION

DEOXYCHOLIC ACID, base component of fat-dissolving injections, has the effect of lysing, puncturing and destroying the cell membranes that cover fat cells.

ADIPOCYTES are cells that store neutral fat generated in the body, and when the cell membrane is destroyed by lipolytic injection, the stored neutral fat is released and contracts.

T.W.I.N.E. *effect*

is the most innovative and powerful product for fat dissolving



MoMed
SKINCARE

This patented production technique allows to provide a **base concentration of active principle of 2%** making it the world's most powerful, which can also be diluted to match individual standards for each patient.

It represents a long lasting (often permanent) solution **for localized fat excess**, and is used for sculpting and improve the look of various areas of the body.

Used for abdomen, culotte de cheval, double chin, thighs, knee fat and other body adiposities, as well as the improvement of lipodistrophic areas, it allows a **quick and durable result** where diet and exercise alone did not manage to solve the inesthetism.



MADE IN ITALY

5 vials
x 10 mL each

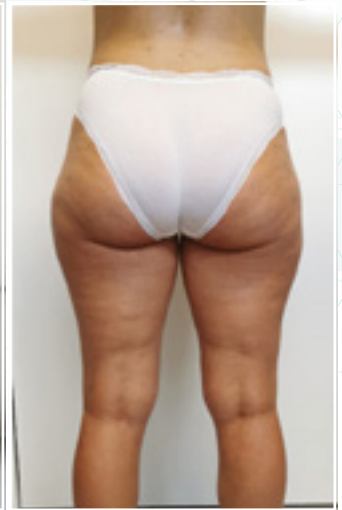
T.W.I.N.E. effect provides cutting edge **Made in Italy** biochemical technology, along with a totally new process of stabilization of the product.

MoMed
SKINCARE

OUR RESULTS



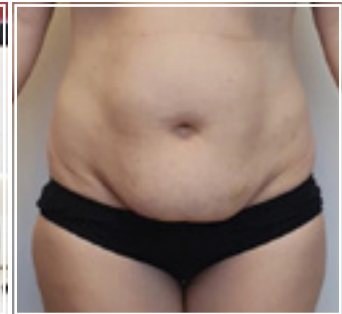
FEMALE AGE 24- RESULT AFTER 2 SESSIONS



FEMALE AGE 38- RESULT AFTER 2 SESSIONS



FEMALE AGE 32 - RESULT AFTER 2 SESSIONS



FEMALE AGE 42- RESULT AFTER 3 SESSIONS



Want to know more?!

CONTACT US:

info@momedskincare.com

Mobile: +372 5367 9979

WA +372 5885 5601

www.momedskincare.com

MoMed
SKINCARE